

## Description:

Hand control of the rotational speed of voltage controllable (230 Vac, 50 Hz) motors. Suitable for inset as well as for surface mounting, the splash-proofed housing allows use in demanding (moist) environments. E.g. Kitchens and/or bathrooms....

Several motors can be connected as long as the current limit is not exceeded. All models have an extra (not regulated) 230 V output.

These speed-controllers offer an excellent and accurate regulation.

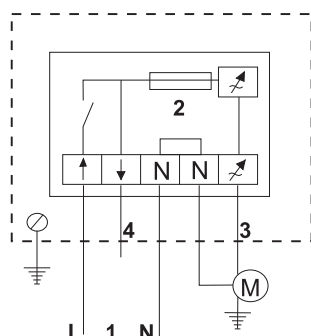
## Features:

	MTY0	MTY1	MTY15	MTY2	MTY25	MTY4
	MTX0	MTX1	MTX15	MTX2	MTX25	MTX4
<b>Current rating (A)</b>	0,05-0,5A	0,1-1,0A	0,1-1,5A	0,2-2,0A	0,2-2,5A	0,4-4,0A
<b>Current fuse (A)</b>	F 630 mA-H	F 1,25 A-H	F 2,00 A-H	F 2,5 A-H	F 3,15 A-H	F 5,00 A-H
<b>IP</b>	44/54					54

- ✓ Supply: 230 Vac - 50 Hz
- ✓ Infinitely variable speed control
- ✓ Fuse (A) (5\*20 mm), spare fuse included
- ✓ Built-in temperature cut-off fuse
- ✓ Control: MTY from minimum to maximum speed  
MTX from maximum to minimum speed
- ✓ Minimum speed by trimmer
- ✓ IP: 44 (inset mounting) /54 (surface mounting)
- ✓ IP: MTY4/MTX4 54 (surface mounting)
- ✓ Plastic enclosure, ABS, RAL 9001
- ✓ Max ambient temperature: 35°C
- ✓ CE-Certificate: The EMC directives: 89/336/CEE with modification 92/31/CEE.  
The low voltage directive: 73/23/CEE



## Wiring diagram:

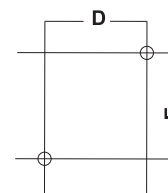
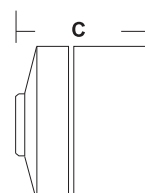
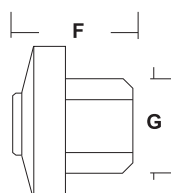
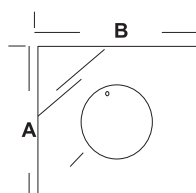


1. - Mains connection: 230 Vac, 50 Hz.
2. - Fuse-box with spare fuse (Fast, ceramic)
3. - Regulated output to motor.
4. - Non regulated output 230 V, or as inlet to controller without bypassing breaker of turning knob.



## Dimensions:

	A	B	C	D	E	F	G	weight
<b>MTY/MTX 0</b>	82	82	65	62	62	56	50*50	230 gr
<b>MTY/MTX 1</b>	82	82	65	62	62	56	50*50	240 gr
<b>MTY/MTX15</b>	82	82	65	62	62	56	50*50	250 gr
<b>MTY/MTX 2</b>	82	82	65	62	62	56	50*50	290 gr
<b>MTY/MTX25</b>	82	82	65	62	62	56	50*50	300 gr
<b>MTY/MTX 4</b>	82	82	65	62	62	56	50*50	360 gr



## Fixing: