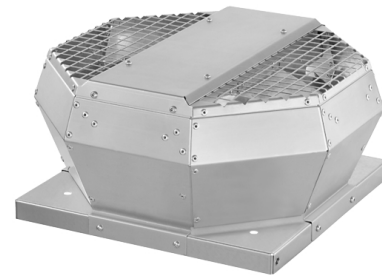
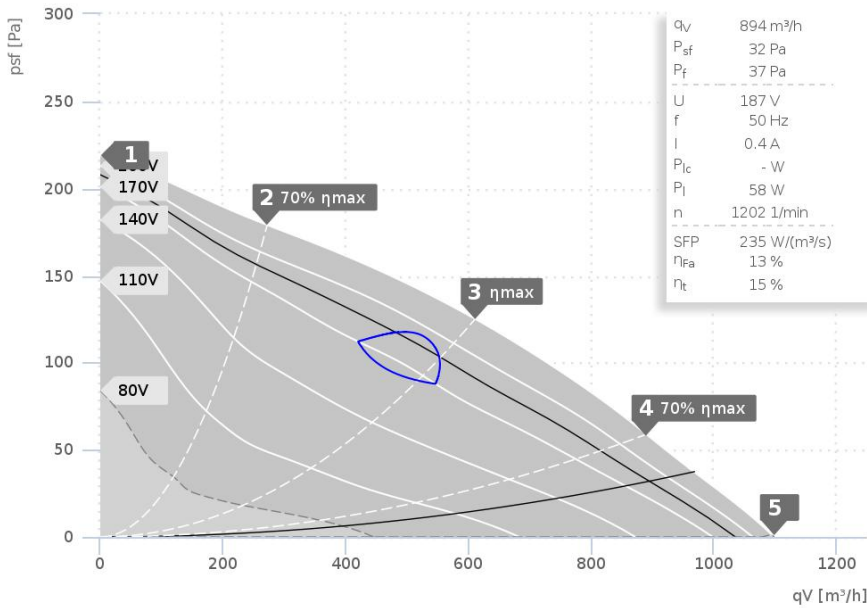


DATA SHEET

DVA 280 E4 30 | 130099



- Backward curved centrifugal fan
- Housing made of aluminium AlMg3
- Speed controllable
- Integrated thermostatic switch
- Maintenance-free ball bearings

— ErP compliant range

Operating Point		1	2	3	4	5
Current I	A	0,3	0,4	0,4	0,4	0,4
Power consumption P ₁	W	67	76	82	80	75
RPM n	1/min	1403	1319	1259	1285	1320
SPL inlet L _{WA5}	dB(A)	60	60	57	60	64
SPL outlet L _{WA6}	dB(A)	64	63	61	65	67
SPL casing break out L _{WA2}	dB(A)	-	-	-	-	-

Sound power (L _W) dB(A)		Medium Frequency Band								
		Σ	63	125	250	500	1k	2k	4k	8k
Inlet	L _{WA5}	58	31	44	48	53	51	50	52	38
Outlet	L _{WA6}	63	33	45	51	58	57	55	53	39
Casing	L _{WA2}	-	-	-	-	-	-	-	-	-

DVA 280 E4 30 130099	
Voltage U _N	230 V 1~
Current I _{max}	0,4 A
Ambient temperature t _A	70 °C
Medium temperatures t _M	70 °C
Speed Control	V
Motor Protection	TAI
Isolation Class	F
Weight	8,3 kg

